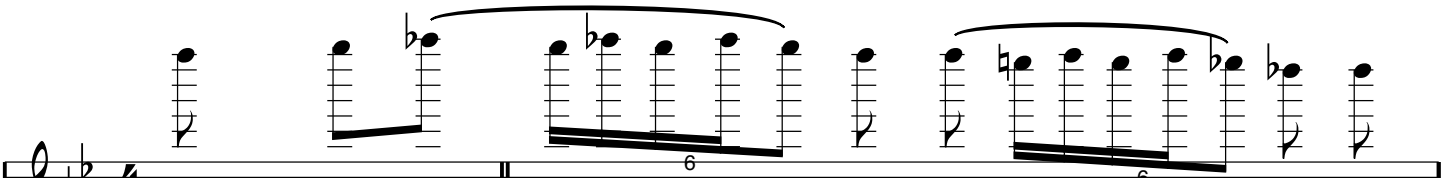


# Jukebox Charlie

## Lloyd Green "Revisited"

Transcription by Jeff Garden and Jan Jonsson



8va

4/4

F# 25 26 1 25 26 25 26 25 23 22 23 22 23 21 19

D#

G#

E 25 25 21

B

G#

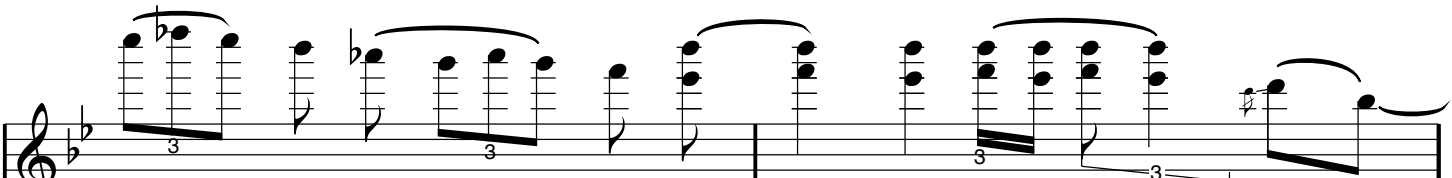
F#

E

D

B

6 6



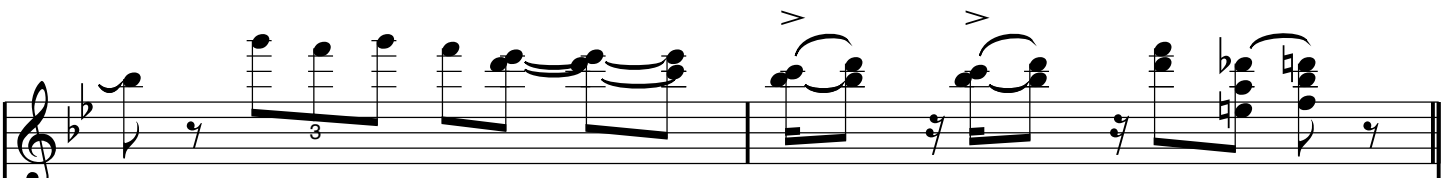
8va

2 3

18 19 18 14 13 14 13 16 16 16 16 16 16

18 13 16 16A 16 16A 16 16A 16 16/18 16

3 3 3 3



8va

4 5

13 13 13D 9 5 6

13 13 13A 13 13 13A 9F 5 6

13B 13A 13 13A 13B 5 6

3

8va

6 7

6 6 6 6 6 A 6 6 A  
6 6 6 B 6 B

8va

8 9

6 1 1 13 B  
6 1 A 1 13 13  
6 1 B 1 A 13 A 13  
13 B

8va

10 11

13 B 13 13 13 13 13 13 13 13 13 B 13 15 B 14 B 13 B  
13 13 13 A 13 13 A 13 13 13 15 14 13  
13

3

8va

12 13

13 11 12 13 13 11/12 11 9 8B 8C 8C 7C 6C 8C 7C 6C 8B 7B 6B

3 3

8va

14 15

6 6 6 6 6 5 6 6 6 5A 5B 5 6 6 5

8va

16 17

6 6A 6 6A 7A 7F 6 6 6 6A 13 6B 6B 6 6A 6B 6B 13 6 7F 6 6B 6 6B 13

3 3

8va

18 19

9

6B 8B 5/6 4

6A 8A 5/6 4 1

12A 13A 13A 9A 8A 6

12B 13B 13B 9 8B 6B

12 13 13 9F 6E

6E

8va

20 21

1

1B 1 1 1B 1 1A 1

1 1A 1 1A 13B 13 13A 13

8va

22 23

6B 6 6A 6 6A 6

6A 6 6B

5B 6B 6A 6 9 9A 8 8

9 8 8

3

8va

24 Pump A pedal 25

9F 8 6 6 6 6 6A 6 6A 6A 6A 6A 6 6A 6 6B 6B 6B 6B 6 12 13 13 13B

8va

26 Pump A pedal 27

13A 13A 13A 13A 12A 11A 9A 9A 9F 9 9F 9F 6 6 9F 13B 13B 13B 13B 12 11 9 9 9A 9A 9A 6 6 9A 13 13 13 12 11 9F 9F 9 6 6 9

8va

28 Bar slant 29

8 4F 4A 4A 4F 13DD 12 11 9DD 8A 4A 4A 4A 13C 12C 11C 9F 8B 7 4 4 4 13B 12B 11B 9

8va

30 31

6 6A 6 6A  
6 6B 6 6B

7 6 6 7 6/7 6 7 6

3

8va

32 33

4 6 9A 6A 6 1A 1B 6 6B 6

3 3 3 3 3 3

8va

34 35

6 6B 6 6A 6C 6 6B 6 6 7 8 9 13 13A 13

6 6 6 6 6 6 13 13 13 13

3 3 3 3 3 3

36 37

6 25 26 25 26 25 23 22 23 22 23 21 19

6 6 6 25 25 21 6 6

38 39

18 19 18 14 13 14 13 16 16 16 16 16 16

18 13 16 16A 16 16A 16 16A 16 16/18 16

3 3 3 3 3 3

40 41

13 13 13D 13 13 13A 13 13 13A 13 13A

13 13B 13B 13B

3 3

Musical notation for measures 41 and 42. Measure 41 features a treble clef, a key signature of one flat, and a 7th fret barre. Measure 42 begins with a 7th fret barre, followed by a quarter rest, a quarter note G4, and a triplet of eighth notes (F4, E4, D4). The bass staff shows chords 13, 13B, 13, and 13D.

Musical notation for measures 43 and 44. Measure 43 contains a melodic line with eighth notes and a triplet of eighth notes. Measure 44 continues the melodic line with a triplet of eighth notes. The bass staff shows chords 6, 6, 6B, 5, 6, 6, 6, 6B, 6, 6A, and 7A.

Musical notation for measures 45 and 46. Measure 45 features a melodic line with eighth notes and a triplet of eighth notes. Measure 46 continues the melodic line with a triplet of eighth notes. The bass staff shows chords 6A, 6A, 7A, 8A, 6, 7, 6, 6, 6B, 6A, 8F, 9F, 8A, 9A, 8, 9, 6A, 6A, 6, 6, 8, 8, 6B, 6B, 8A, 8A, 8B, and 8B.



8va

47 48

8 9F 9F 6 8 8A 6 6B 4 6 6 5 4  
8A 9A 9A 6 8A 6 6 6A 4 6 6 5 4  
8B 9 9 6 8B 6B 6 6A 4 6 6 5 4  
6E 6E

3 3 3 3

8va

49 50

1B 1 1 1A 1A/2 1 1 1A 1 13B 13 13A 13  
1 1 1 1A 1A/2 1 1 1A 1 1B 1A 1B 1A 13A 13

8va

51 52

6B 6 6 6A 6 6A 6B 7 6 6 7 6 7 6 6

3

8va

53 Bar slant

54

6 7G 6 4 1

6 6 6 4 4C 1C 1 1 1B 1 1A

12 13 13B

3 3

Detailed description: This system contains the musical notation for measures 53 and 54. The top staff is a treble clef with a key signature of one flat and a common time signature. Measure 53 features a series of eighth notes with accents, followed by a triplet of eighth notes. Measure 54 continues with a triplet of eighth notes and a half note. Below the staff are two guitar staves. The first staff shows fret numbers for measures 53 and 54. Measure 53 has frets 6, 7G, 6, 4, and 1. Measure 54 has frets 1, 1B, 1, and 1A. The second staff shows fret numbers for measures 53 and 54. Measure 53 has frets 6, 6, 6, 4, 4C, and 1C. Measure 54 has frets 1, 1, 1, 12, 13, and 13B. There are also some additional fret numbers like 13 and 13B in the second staff for measures 53 and 54.

8va

55

56

13 13A 13A 14A 15A 13 14 13 13B 13 13 13B 13B 13B

13

Detailed description: This system contains the musical notation for measures 55 and 56. The top staff is a treble clef with a key signature of one flat and a common time signature. Measure 55 features a series of eighth notes with accents, followed by a triplet of eighth notes. Measure 56 continues with a triplet of eighth notes and a half note. Below the staff are two guitar staves. The first staff shows fret numbers for measures 55 and 56. Measure 55 has frets 13, 13A, 13A, 14A, and 15A. Measure 56 has frets 13, 14, 13, 13B, 13, 13, 13B, 13B, and 13B. The second staff shows fret numbers for measures 55 and 56. Measure 55 has frets 13, 13A, 13A, 14A, and 15A. Measure 56 has frets 13, 14, 13, 13B, 13, 13, 13B, 13B, and 13B.

8va

57 Pump A pedal Pump A pedal Pump A pedal

58 Bar slant Bar slant

13 13 11 10 8 8A 8A 13 13 13A 13 12 11

13A 13 11A 10 8A 8A 12 13A 13A 12A 11A

4 6 6 12 13 13A 13 12 11 10

4 6 6B 12 12 11 10

3 3 3 3

Detailed description: This system contains the musical notation for measures 57 and 58. The top staff is a treble clef with a key signature of one flat and a common time signature. Measure 57 features a series of eighth notes with accents, followed by a triplet of eighth notes. Measure 58 continues with a triplet of eighth notes and a half note. Below the staff are two guitar staves. The first staff shows fret numbers for measures 57 and 58. Measure 57 has frets 13, 13, 11, 10, 8, 8A, and 8A. Measure 58 has frets 4, 6, 6, 13, 13, 13A, 13, 12, 11, and 11. The second staff shows fret numbers for measures 57 and 58. Measure 57 has frets 13A, 13, 11A, 10, 8A, 8A, 12, 13A, 13A, 12A, and 11A. Measure 58 has frets 4, 6, 6B, 12, 12, 11, and 10. There are also some additional fret numbers like 13 and 13A in the second staff for measures 57 and 58.

8va

59 60

11 6 6  
11 6 6A  
11 6 6B

7 6 6 7 6/7 6 7 6

3

8va

61 62

6 6DD  
6 6A 6 3 1  
6 3 1

1A 6  
1B 6

6 6B 6

3 3 3 3

8va

63 64

6 6B 6 4  
6 6A 6 4

6 6 6 7 8 9 13 13 13A 13A 13  
6 6 13 13 13 13

3 3

Musical notation for guitar system 65-66. The system includes a treble clef, a key signature of one flat (Bb), and a 4/4 time signature. The notation shows a sequence of chords and melodic lines. A '7' is written above the first measure. A '6' is written below the second measure. A '6' is written below the sixth measure. A '6' is written below the seventh measure. The system is numbered 65 and 66.

Musical notation for guitar system 67-68. The system includes a treble clef, a key signature of one flat (Bb), and a 4/4 time signature. The notation shows a sequence of chords and melodic lines. A '3' is written below the first measure. A '3' is written below the second measure. A '3' is written below the sixth measure. A '3' is written below the seventh measure. The system is numbered 67 and 68.

Musical notation for guitar system 69-70. The system includes a treble clef, a key signature of one flat (Bb), and a 4/4 time signature. The notation shows a sequence of chords and melodic lines. A '3' is written below the second measure. A '3' is written below the third measure. A '3' is written below the fourth measure. A '3' is written below the fifth measure. A '3' is written below the sixth measure. The system is numbered 69 and 70.

Lloyd Green copedent:

A = 5th and 10th string B to C# raise  
B = 3rd and 6th string G# to A raise  
C = 4th string E to F# raise + 5th string B to C# raise  
D = 2nd string D# to D lower  
DD = 2nd string D# to C# lower  
E = 8th string E to D# lower  
F = 4th and 8th string E to F raise  
G = 1st string F# to G raise